



DISH WIRELESS SITE NAME:  
SCE TYLER SYLMAR

DISH WIRELESS SITE NUMBER:  
LALAX04506A - TRANSMISSION TOWER  
EAGLE ROCK-SYLMAR  
220KV M5-T2 BUILT 1971

DISH WIRELESS SITE ADDRESS:  
34°19'12.28"N, 118°26'35.81"W  
SYLMAR, CA 91342

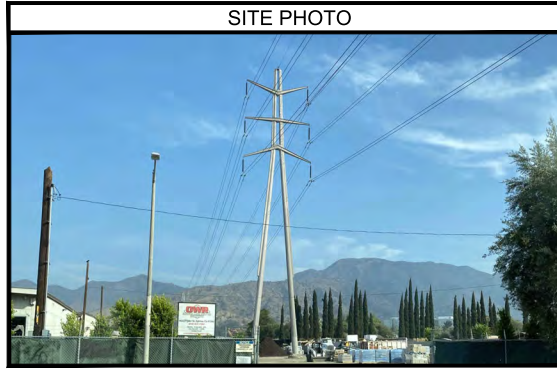
CODE COMPLIANCE	
ALL WORK AND MATERIALS SHALL BE PERFORMED AND INSTALLED IN ACCORDANCE WITH THE CURRENT EDITIONS OF THE FOLLOWING CODES AS ADOPTED BY THE LOCAL GOVERNING AUTHORITIES. NOTHING IN THESE PLANS IS TO BE CONSTRUCTED TO PERMIT WORK NOT CONFORMING TO THESE CODES.	
1. 2019 CALIFORNIA ADMINISTRATIVE CODE	6. 2019 CALIFORNIA FIRE CODE
2. 2019 CALIFORNIA BUILDING CODE	7. ANY LOCAL BUILDING CODE AMENDMENTS
3. 2019 CALIFORNIA ELECTRIC CODE	8. CITY/COUNTY ORDINANCES
4. 2019 CALIFORNIA MECHANICAL CODE	9. ANSI / TIA-222 STRUCTURAL CODE
5. 2019 CALIFORNIA PLUMBING CODE	10. NFPA 790 - LIGHTING PROTECTION CODE
HANDICAP REQUIREMENTS: FACILITY IS UNMANNED AND NOT FOR HUMAN HABITATION, AND IS EXEMPTED FROM ACCESSIBILITY REQUIREMENTS IN ACCORDANCE WITH 2010 CALIFORNIA BUILDING CODE SECTION 11B-203.5.	
THIS FACILITY IS UNMANNED AND NOT FOR HUMAN HABITATION. A TECHNICIAN WILL VISIT THE SITE AS REQUIRED FOR ROUTINE MAINTENANCE. THE PROJECT WILL NOT RESULT IN ANY SIGNIFICANT DISTURBANCE OR EFFECT ON DRAINAGE. NO SANITARY SEWER SERVICE, POTABLE WATER, OR TRASH DISPOSAL IS REQUIRED AND NO COMMERCIAL SIGNAGE IS NEW.	

SCOPE OF WORK	
THIS IS NOT AN ALL INCLUSIVE LIST. CONTRACTOR SHALL UTILIZE SPECIFIED EQUIPMENT PART OR ENGINEER APPROVED EQUIVALENT. CONTRACTOR SHALL VERIFY ALL NEEDED EQUIPMENT TO PROVIDE A FUNCTIONAL SITE. THE PROJECT GENERALLY CONSISTS OF THE FOLLOWING:	
TOWER SCOPE OF WORK:	
<ul style="list-style-type: none"> <li>INSTALL (6) 8' TALL 8-PORT ANTENNAS</li> <li>INSTALL (6) RADIOS AT ANTENNAS</li> <li>INSTALL (1) SURGE SUPPRESSOR AT ANTENNAS</li> <li>INSTALL (1) HYBRID CABLE</li> </ul>	
GROUND SCOPE OF WORK:	
<ul style="list-style-type: none"> <li>INSTALL 125/150' TALL CHAIN-LINK ENCLOSURE</li> <li>INSTALL (2) EQUIPMENT CABINET ON SLAB</li> <li>INSTALL (1) H-FRAME W/ PPC AND TELCO CABINET</li> <li>INSTALL (1) 200A 120/208V METER PEDESTAL</li> <li>INSTALL (1) MPP PH FOR FIBER</li> <li>INSTALL (1) EMERGENCY GENERATOR CAMLOCK</li> </ul>	

SITE INFORMATION		PROJECT DIRECTORY	
PROPERTY OWNER:	SOUTHERN CALIFORNIA EDISON	APPLICANT:	DISH WIRELESS
ADDRESS:	34°19'12.28"N, 118°26'35.81"W SYLMAR, CA 91342		16812 ARMSTRONG AVE, STE 200 IRVINE, CA 92606
			RAQUEL BARNAS (714) 397-0401 raquel.barnas@dish.com
TOWER TYPE:	TRANSMISSION POLE		
TOWER CO SITE ID:	TBD	TOWER MANAGER:	SOUTHERN CALIFORNIA EDISON
TOWER APP NUMBER:	TBD		
COUNTY:	LOS ANGELES COUNTY		
LATITUDE (NAD 83):	34°19'12.28"N 34.320078°	SITE DESIGNER:	EUKON GROUP RICH BRUNET 65 POST, SUITE 1000 IRVINE, CA 92618 (949) 553-8566
LONGITUDE (NAD 83):	118°26'35.81"W -118.443281°		
ZONING JURISDICTION:	COUNTY OF LOS ANGELES	LEASING MANAGER:	JON SILVA (714) 393-7963 jon.silva@eukongroup.com
ZONING DISTRICT:	PF-1VL-K-CD-7	PLANNING MANAGER:	MELISSA KEITH (949) 701-6925 melissa.keith@eukongroup.com
PARCEL NUMBER:	2564-008-800	CONSTRUCTION MANAGER:	FUMHIKO ITOKAZU (626) 290-4928 fumhiko.itokazu@dish.com
OCCUPANCY GROUP:	U	RF ENGINEER:	CRAIG STANZIANO (XXX) XXX-XXXX craig.stanziano@dish.com
POWER COMPANY:	SCE		
TELEPHONE COMPANY:	FRONTIER, SPECTRUM		

16812 ARMSTRONG AVE  
SUITE 200  
IRVINE, CA 92606

an SFC Communications, Inc. Company  
65 POST, SUITE 1000  
IRVINE, CA 92618  
TEL: (949) 553-8566  
www.eukongroup.com



UNDERGROUND SERVICE ALERT  
UTILITY NOTIFICATION CENTER OF CALIFORNIA  
(800) 422-4133  
WWW.CALIFORNIA811.ORG  
CALL 2-14 WORKING DAYS UTILITY NOTIFICATION PRIOR TO CONSTRUCTION

DIRECTIONS	
DIRECTIONS FROM DISH WIRELESS OFFICE:	
<ol style="list-style-type: none"> <li>START OUT GOING NORTHEAST ON ARMSTRONG AVE TOWARD DEERE AVE.</li> <li>TURN LEFT ONTO BARRANCA PKWY.</li> <li>BARRANCA PKWY BECOMES E DYER RD.</li> <li>MERGE ONTO CA-55 N TOWARD RIVERSIDE.</li> <li>MERGE ONTO I-5 N VIA EXIT 10B TOWARD SANTA ANA.</li> <li>MERGE ONTO CA-118 E VIA EXIT 556A.</li> <li>MERGE ONTO I-210 W TOWARD SACRAMENTO.</li> <li>TAKE THE POLK ST EXIT, EXIT 3 THEN TURN RIGHT ONTO POLK ST.</li> <li>TURN LEFT ONTO FENTON AVE THEN TURN LEFT ONTO TYLER ST.</li> <li>34°19'12.28"N, 118°26'35.81"W TYLER ST SYLMAR, CA 91342 IS ON THE RIGHT.</li> </ol>	



GENERAL NOTES	
THIS FACILITY IS UNMANNED AND NOT FOR HUMAN HABITATION. A TECHNICIAN WILL VISIT THE SITE AS REQUIRED FOR ROUTINE MAINTENANCE. THE PROJECT WILL NOT RESULT IN ANY SIGNIFICANT DISTURBANCE OR EFFECT ON DRAINAGE. NO SANITARY SEWER SERVICE, POTABLE WATER, OR TRASH DISPOSAL IS REQUIRED AND NO COMMERCIAL SIGNAGE IS NEW.	
IF CONTRACTOR ENCOUNTERS CONDITIONS IN FIELD, EITHER UNFORESEEN OR IN SOME MANNER IN CONFLICT WITH THESE DRAWINGS, THE CONTRACTOR SHALL NOTIFY THE REGISTERED DESIGN PROFESSIONAL OF SUCH CONDITIONS IN WRITING AND SHALL ACKNOWLEDGE ANY WORK DONE OUTSIDE OF JURISDICTIONAL PERMITTED PLANS IS DONE AT CONTRACTORS OWN RISK.	

**11"x17" PLOT IS HALF SCALE UNLESS OTHERWISE NOTED**

FULL SIZE = 24"x36". ANY OTHER SIZE PRINT IS NOT ORIGINAL SCALE.  
ALL INDICATED DIMENSIONS SHALL TAKE PRECEDENT OVER SCALED DIMENSIONS.

SHEET INDEX		
SHEET	TITLE	DESCRIPTION
T-1	TITLE SHEET	
LS-1	TOPOGRAPHIC SURVEY	
LS-2	TOPOGRAPHIC SURVEY	
A-1	SITE PLAN	
A-2	ENLARGED SITE PLAN	
A-3	ANTENNA PLAN AND SCHEDULE	
A-4	ELEVATIONS	
A-5	ELEVATIONS	
A-6	ELEVATIONS	
A-7	EQUIPMENT PLAN AND DETAILS	

IT IS A VIOLATION OF LAW FOR ANY PERSON, UNLESS THEY ARE ACTING UNDER THE DIRECTION OF THE LICENSED PROFESSIONAL ENGINEER, TO ALTER THIS DOCUMENT.

DRAWN BY:	UTILITIES	A&E
CHECKED BY:	JMD	GD
		RB

RFDS REV #: --

ZONING DRAWINGS		
SUBMITTALS		
REV	DATE	DESCRIPTION
0	07/29/21	90% ZONING DRAWINGS
1	10/25/21	90% ZONING DRAWINGS

DISH WIRELESS PROJECT INFORMATION  
SCE TYLER SYLMAR  
LALAX04506A  
34°19'12.28"N, 118°26'35.81"W  
SYLMAR, CA 91342

SHEET TITLE  
**TITLE SHEET**

SHEET NUMBER  
**T-1**

EUKON, DISH, EDR-V1



**APN**  
2504-008-800

**SITE ADDRESS**  
34°19'12.28"N, 118°26'35.81"W, SYLMAR, CA 91342

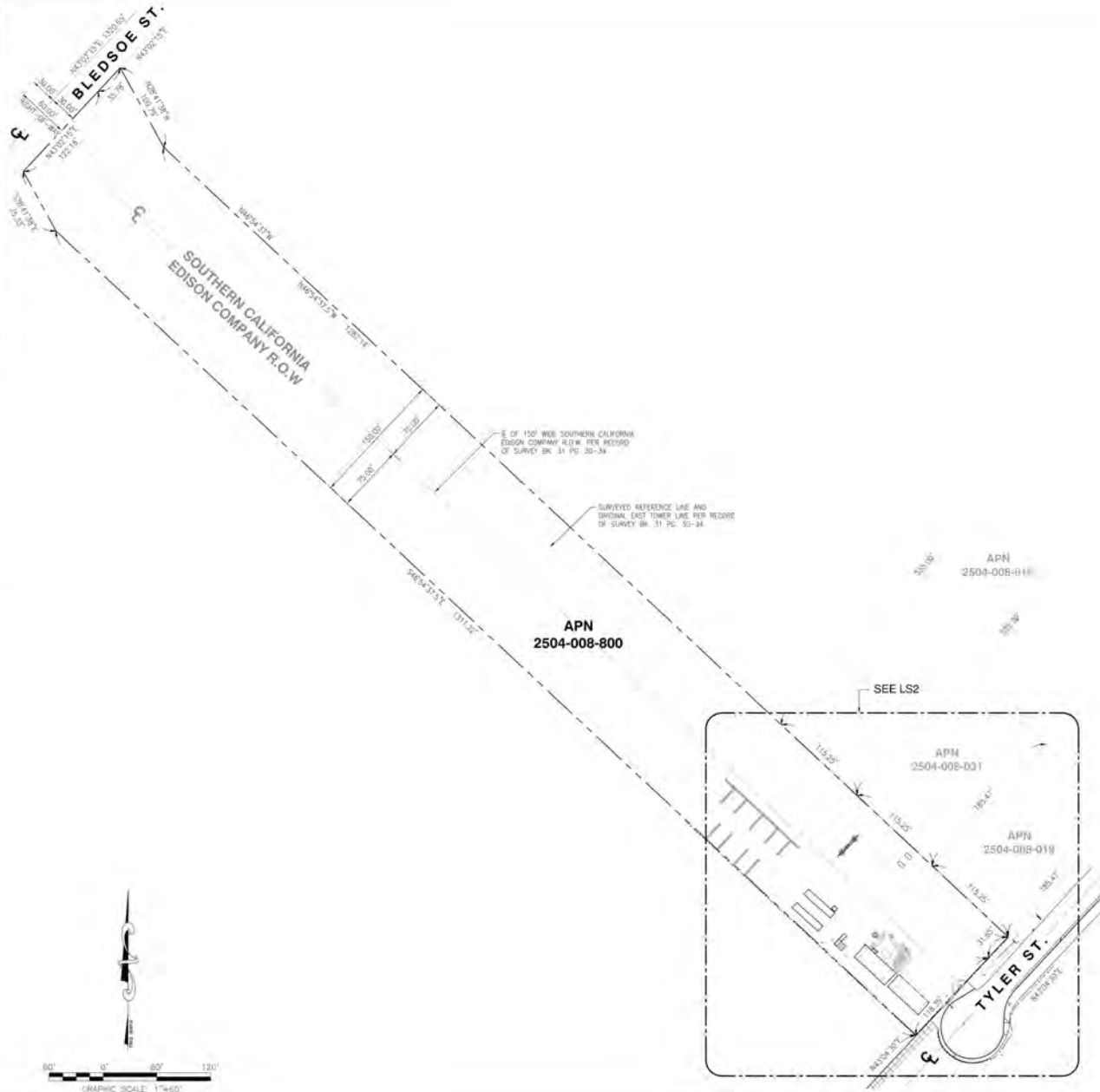
**TITLE REPORT**  
NO TITLE REPORT HAS BEEN ISSUED DURING THE TIME OF SURVEY

**BASIS OF BEARING**  
BEARINGS SHOWN HEREON ARE BASED UPON U.S. STATE PLANE NAD83 COORDINATE SYSTEM (CALIFORNIA STATE PLANE COORDINATE ZONE FIVE, DETERMINED BY GPS OBSERVATIONS.

**BENCHMARK**  
ELEVATIONS ARE BASED ON CRTN (CSRS) NETWORK BROADCAST COORDINATES.

**FLOODZONE**  
SITE IS LOCATED IN FLOOD ZONE "X" AS PER F.I.R.M. MAP NO. 06037C10750 EFFECTIVE DATE 06/02/2021.

- NOTES**
1. THIS IS NOT A BOUNDARY SURVEY. THIS IS A SPECIALIZED TOPOGRAPHIC MAP. THE PROPERTY LINES AND EXHIBENTS SHOWN HEREON ARE FROM RECORD INFORMATION AS NOTED HEREON. CELLSITE CONCEPTS TRANSLATED THE TOPOGRAPHIC SURVEY TO RECORD INFORMATION USING FOUND MONUMENTS SHOWN HEREON. THE LOCATION OF PROPERTY LINES SHOWN HEREON ARE APPROXIMATE AND FOR INFORMATIONAL PURPOSES ONLY. THEY ARE NOT TO BE RELIED UPON AS THE ACTUAL BOUNDARY LINES.
  2. ANY CHANGES MADE TO THE INFORMATION ON THIS PLAN, WITHOUT THE WRITTEN CONSENT OF CELLSITE CONCEPTS, RELIEVES CELLSITE CONCEPTS OF ANY AND ALL LIABILITY.
  3. THE HEIGHTS AND ELEVATIONS FOR THE TREES, BUSHES AND OTHER LIVING PLANTS SHOWN HEREON SHOULD BE CONSIDERED APPROXIMATE (+/-) AND ONLY FOR THE DATE OF THIS SURVEY. THEY ARE PROVIDED AS A GENERAL REFERENCE AND SHOULD NOT BE USED FOR DESIGN PURPOSES.
  4. WRITTEN DIMENSIONS SHALL TAKE PRECEDENCE OVER SCALES & SHALL BE VERIFIED ON THE JOB SITE. ANY DISCREPANCY SHALL BE BROUGHT TO THE NOTICE OF THE SURVEYOR PRIOR TO COMMENCEMENT OF ANY WORK.
  5. FIELD SURVEY COMPLETED ON JULY 01, 2021.



PROPERTY LINES DERIVED FROM  
RECORD OF SURVEY U.S. B.L. 31 PG. 30-34 DATED AUGUST 8, 1931  
RECORD OF SURVEY B.L. 308 PG. 56 DATED MAY 13, 2019  
FIELD BOOK 228-133 PG. 226 DATED SEPTEMBER 06, 1970



REV	DATE	DESCRIPTION
1	07/07/2021	PRELIMINARY SURVEY

ISSUED DATE: **JULY 07, 2021**

ISSUED FOR: **PRELIMINARY SURVEY**

ENCLOSURE:

PROJECT INFORMATION:  
**LALAX04506A**  
N34°19'12.28"N, 118°26'35.81"W  
SYLMAR, CA 91342

DRAWN BY: WNE  
CHECKED BY: SH  
SHEET TITLE: **TOPOGRAPHIC SURVEY**

SHEET NUMBER: **LS-1**

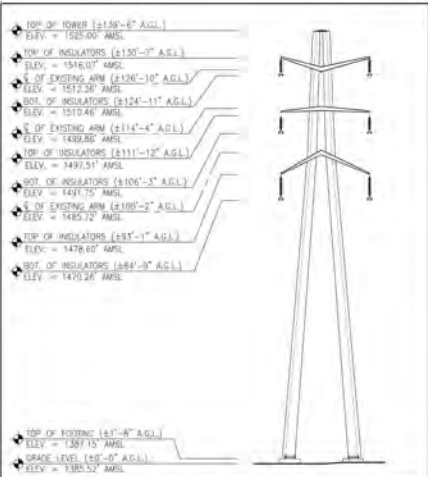
**LEGEND**

- CENTER LINE
- - - PROPERTY LINE
- · - · CHAIN-LINK FENCE
- /// EDGE OF PAVEMENT
- ▬ CMU WALL
- EP EDGE OF PAVEMENT
- EG EXISTING GRADE
- FS FINISH SURFACE
- FL FLOW LINE
- LP LIP OF CUTTER
- TC TOP OF CURB
- TP TOP OF UTILITY POLE
- BT TOP OF BUILDING
- TT TOP OF TOWER
- TC TOP OF CLK POINT
- TS TOP OF SIGNAGE
- TW TOP OF WALL
- TREE
- BUSH

**COORDINATES**

EXISTING SCE TRANSMISSION TOWER

(LATITUDE) 24°19'12.28"N  
 (LONGITUDE) 118°26'35.81"W  
 (ELEVATION) 118.443281



**SCE TRANSMISSION TOWER PROFILE**

PROPERTY LINES DERIVED FROM  
 RECORD OF SURVEY L.S. BK. 31, PG. 30-44 DATED AUGUST 8, 1981  
 RECORD OF SURVEY BK. 208, PG. 53 DATED MAY 13, 2019  
 FIELD BOOK 228-153 PG. 226 DATED SEPTEMBER 06, 1972



REV	DATE	DESCRIPTION
1	07/07/2021	PRELIMINARY SURVEY

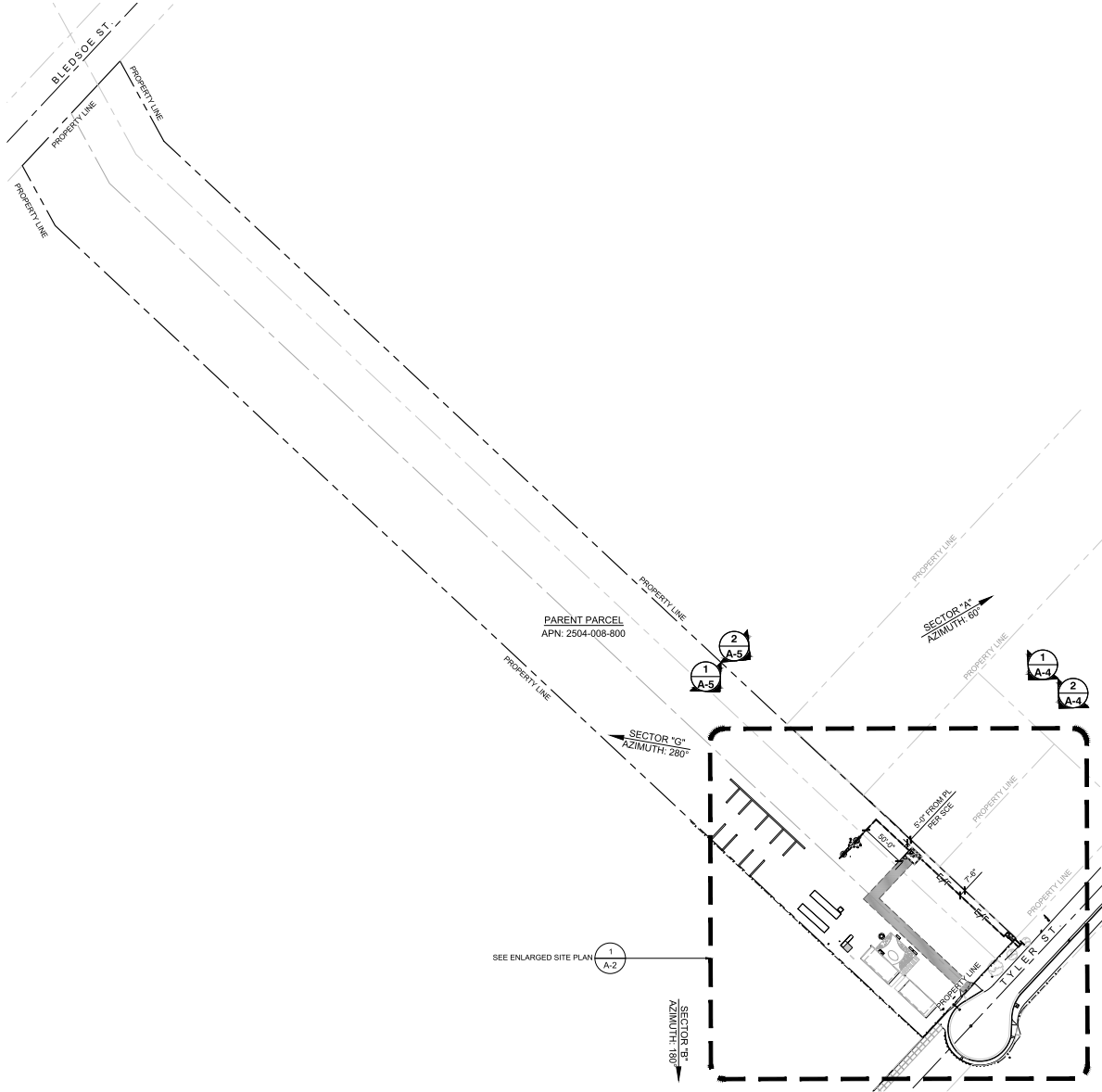
ISSUED DATE: **JULY 07, 2021**  
 ISSUED FOR: **PRELIMINARY SURVEY**

PROJECT INFORMATION:
<b>LALAX04506A</b>
N34°19'12.28"N, 118°26'35.81"W SYLMAR, CA 91342

DRAWN BY: YVE
CHECKED BY: RH
SHEET TITLE: <b>TOPOGRAPHIC SURVEY</b>
SHEET NUMBER: <b>LS-2</b>

**NOTES:**

1. IF DIMENSIONS SHOWN ON PLAN DO NOT SCALE CORRECTLY, CHECK FOR REDUCTION OR ENLARGEMENT FROM ORIGINAL PLANS.
2. CONTRACTOR SHALL FIELD VERIFY ALL DIMENSIONS.
3. CONTRACTOR SHALL MAINTAIN A 10'-0" MINIMUM SEPARATION BETWEEN THE NEW GPS UNIT TRANSMITTING ANTENNAS AND EXISTING GPS UNITS.
4. CONTRACTOR TO VERIFY WITH DISH WIRELESS C.M. THE LOCATION OF THE POWER AND FIBER SOURCE PRIOR TO CONSTRUCTION.



16812 ARMSTRONG AVE  
SUITE 200  
IRVINE, CA 92606



65 POST, SUITE 1000  
IRVINE, CA 92618  
TEL: (949) 553-8566  
[www.eukongroup.com](http://www.eukongroup.com)

IT IS A VIOLATION OF LAW FOR ANY PERSON, UNLESS THEY ARE ACTING UNDER THE DIRECTION OF THE LICENSED PROFESSIONAL ENGINEER, TO ALTER THIS DOCUMENT.

DRAWN BY:	UTILITIES CHECKED BY:	A&E CHECKED BY:
JMD	GD	RB

RFDS REV #: --

**ZONING DRAWINGS**

SUBMITTALS		
REV	DATE	DESCRIPTION
0	07/29/21	90% ZONING DRAWINGS
1	10/25/21	90% ZONING DRAWINGS

DISH WIRELESS PROJECT INFORMATION

**SCE TYLER SYLMAR**  
**LALAX04506A**  
34°19'12.28"N, 118°26'35.81"W  
SYLMAR, CA 91342

SHEET TITLE  
**SITE PLAN**

SHEET NUMBER  
**A-1**

EUKON DISH EDR-V1

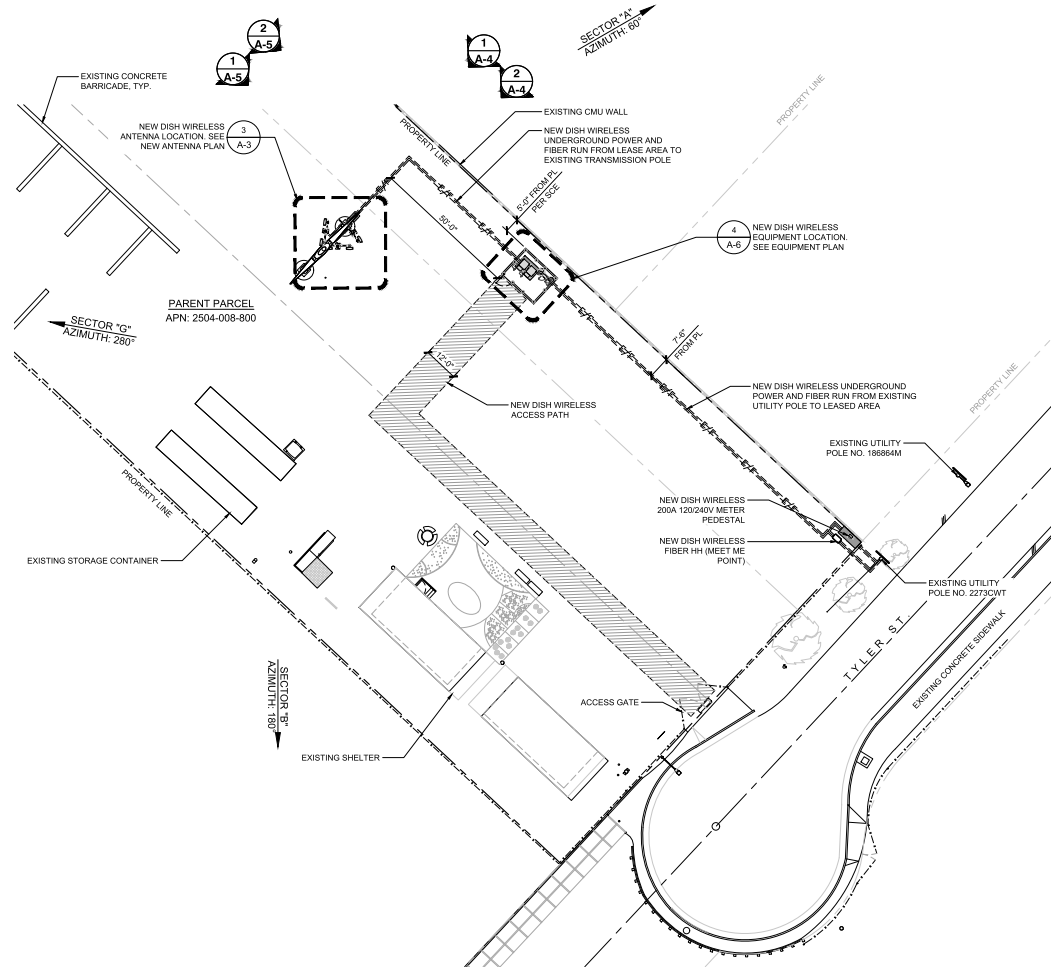
**SITE PLAN**



1

**NOTES:**

1. IF DIMENSIONS SHOWN ON PLAN DO NOT SCALE CORRECTLY, CHECK FOR REDUCTION OR ENLARGEMENT FROM ORIGINAL PLANS.
2. CONTRACTOR SHALL FIELD VERIFY ALL DIMENSIONS.
3. CONTRACTOR SHALL MAINTAIN A 10'-0" MINIMUM SEPARATION BETWEEN THE NEW GPS UNIT TRANSMITTING ANTENNAS AND EXISTING GPS UNITS.
4. CONTRACTOR TO VERIFY WITH DISH WIRELESS C.M. THE LOCATION OF THE POWER AND FIBER SOURCE PRIOR TO CONSTRUCTION.



16812 ARMSTRONG AVE  
SUITE 200  
IRVINE, CA 92606



65 POST, SUITE 1000  
IRVINE, CA 92618  
TEL: (949) 553-8566  
[www.eukongroup.com](http://www.eukongroup.com)

IT IS A VIOLATION OF LAW FOR ANY PERSON, UNLESS THEY ARE ACTING UNDER THE DIRECTION OF THE LICENSED PROFESSIONAL ENGINEER, TO ALTER THIS DOCUMENT.

DRAWN BY:	UTILITIES CHECKED BY:	A&E CHECKED BY:
JMD	GD	RB

RFDS REV #: --

**ZONING DRAWINGS**

SUBMITTALS		
REV	DATE	DESCRIPTION
0	07/29/21	90% ZONING DRAWINGS
1	10/25/21	90% ZONING DRAWINGS

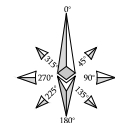
DISH WIRELESS PROJECT INFORMATION  
**SCE TYLER SYLMAR**  
**LALAX04506A**  
34°19'12.28"N, 118°26'35.81"W  
SYLMAR, CA 91342

SHEET TITLE

**ENLARGED SITE PLAN**

SHEET NUMBER

**A-2**



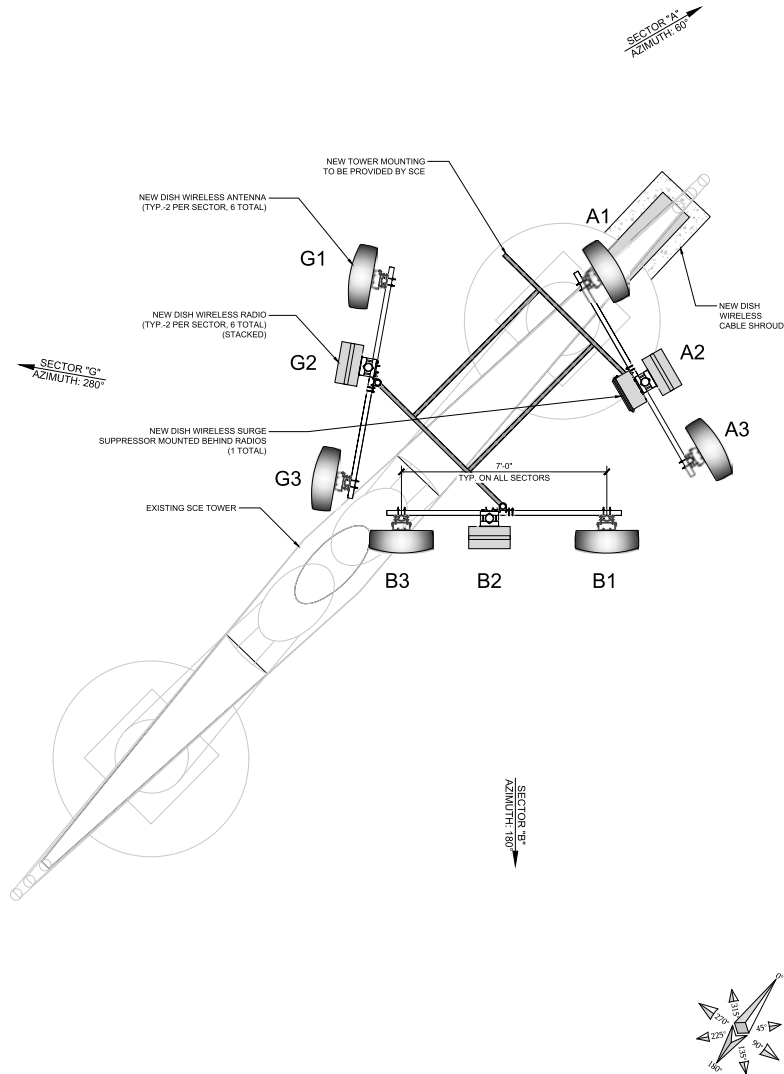
1

EUKON DISH EDR V1

**ENLARGED SITE PLAN**

**NOTES:**

- IF DIMENSIONS SHOWN ON PLAN DO NOT SCALE CORRECTLY, CHECK FOR REDUCTION OR ENLARGEMENT FROM ORIGINAL PLANS.
- CONTRACTOR SHALL FIELD VERIFY ALL DIMENSIONS.
- ANTENNA SPECIFICATIONS REFER TO ANTENNA SCHEDULE AND TO FINAL CONSTRUCTION RFDS FOR ALL RF DETAILS.



NOT USED

SCALE NONE 2

SECTOR	POSITION	ANTENNA AND RRH										TRANSMISSION CABLE		OVP JUNCTION BOX	
		EXISTING OR NEW	MANUFACTURER - MODEL NUMBER	TECHNOLOGY	SIZE (HxWxD)	WEIGHT	AZIMUTH	RAD CENTER	MECH. TILT	ELEC. TILT	COAX QTY. LENGTH	HYBRID QTY. LENGTH/WEIGHT	MANUFACTURER - MODEL NUMBER	WEIGHT	
ALPHA	A1	NEW (1) ANTENNA	MANUF. -XXXX	NR	72.8" x 20.0" x 8.0"	64.5 LBS.	60°	60°	0	2	<10'	(1) HIGH-CAPACITY HYBRID CABLE (170' LONG) 1.658 LBS./FT.	MANUF. -XXXX	21.85 LBS.	
	A2	NEW (2) RADIO	MANUF. -XXXX	NR	15.75" x 14.98" x 9.06"	74.95 LBS.	--	--	--	--					
	A3	NEW (1) ANTENNA	MANUF. -XXXX	NR	72.8" x 20.0" x 8.0"	64.5 LBS.	60°	60°	0	2					
	A4	--	--	--	--	--	--	--	--	--					
BETA	B1	NEW (1) ANTENNA	MANUF. -XXXX	NR	72.8" x 20.0" x 8.0"	64.5 LBS.	180°	60°	0	2	--	--	--	--	
	B2	NEW (2) RADIO	MANUF. -XXXX	NR	15.75" x 14.98" x 9.06"	74.95 LBS.	--	--	--	--					
	B3	NEW (1) ANTENNA	MANUF. -XXXX	NR	72.8" x 20.0" x 8.0"	64.5 LBS.	180°	60°	0	2					
	B4	--	--	--	--	--	--	--	--	--					
GAMMA	G1	NEW (1) ANTENNA	MANUF. -XXXX	NR	72.8" x 20.0" x 8.0"	64.5 LBS.	280°	60°	0	2	--	--	--	--	
	G2	NEW (2) RADIO	MANUF. -XXXX	NR	15.75" x 14.98" x 9.06"	74.95 LBS.	--	--	--	--					
	G3	NEW (1) ANTENNA	MANUF. -XXXX	NR	72.8" x 20.0" x 8.0"	64.5 LBS.	280°	60°	0	2					
	G4	--	--	--	--	--	--	--	--	--					



16812 ARMSTRONG AVE  
SUITE 200  
IRVINE, CA 92606



65 POST, SUITE 1000  
IRVINE, CA 92618  
TEL: (949) 553-8566  
[www.eukongroup.com](http://www.eukongroup.com)

IT IS A VIOLATION OF LAW FOR ANY PERSON, UNLESS THEY ARE ACTING UNDER THE DIRECTION OF THE LICENSED PROFESSIONAL ENGINEER, TO ALTER THIS DOCUMENT.

DRAWN BY: JMD  
UTILITIES CHECKED BY: GD  
A&E CHECKED BY: RB

RFDS REV #: --

**ZONING DRAWINGS**

SUBMITTALS		
REV	DATE	DESCRIPTION
0	07/29/21	90% ZONING DRAWINGS
1	10/25/21	90% ZONING DRAWINGS

DISH WIRELESS PROJECT INFORMATION  
**SCE TYLER SYLMAR**  
**LALAX04506A**  
34°19'12.28"N, 118°26'35.81"W  
SYLMAR, CA 91342

**ANTENNA PLAN AND SCHEDULE**

SHEET NUMBER

**A-3**

ANTENNA PLAN

SCALE 1/2"=1'-0" 3

ANTENNA SCHEDULE

SCALE NONE 1



16812 ARMSTRONG AVE  
SUITE 200  
IRVINE, CA 92606



an SFC Communications, Inc. Company  
65 POST, SUITE 1000  
IRVINE, CA 92618  
TEL: (949) 553-8566  
[www.eukongroup.com](http://www.eukongroup.com)

IT IS A VIOLATION OF LAW FOR ANY PERSON, UNLESS THEY ARE ACTING UNDER THE DIRECTION OF THE LICENSED PROFESSIONAL ENGINEER, TO ALTER THIS DOCUMENT.

DRAWN BY:	UTILITIES CHECKED BY:	A&E CHECKED BY:
JMD	GD	RB

RFDS REV #: --

### ZONING DRAWINGS

SUBMITTALS		
REV	DATE	DESCRIPTION
0	07/29/21	90% ZONING DRAWINGS
1	10/25/21	90% ZONING DRAWINGS

DISH WIRELESS PROJECT INFORMATION  
**SCE TYLER SYLMAR**  
**LALAX04506A**  
34°19'12.28"N, 118°26'35.81"W  
SYLMAR, CA 91342

### SHEET TITLE

## ELEVATIONS

SHEET NUMBER

# A-4

#### NOTES:

- IF DIMENSIONS SHOWN ON PLAN DO NOT SCALE CORRECTLY, CHECK FOR REDUCTION OR ENLARGEMENT FROM ORIGINAL PLANS.
- CONTRACTOR SHALL FIELD VERIFY ALL DIMENSIONS.
- CONTRACTOR SHALL MAINTAIN A 10'-0" MINIMUM SEPARATION BETWEEN THE NEW GPS UNIT, TRANSMITTING ANTENNAS AND EXISTING GPS UNITS.

TOP OF EXISTING TRANSMISSION TOWER  
ELEV = ± 138'-0"

TOP OF NEW DISH WIRELESS ANTENNAS  
ELEV = ± 63'-0"  
NEW DISH WIRELESS ANTENNA RAD CENTER  
ELEV = ± 60'-0"

NEW DISH WIRELESS RADIO  
(TYP. 2 PER SECTOR, 6 TOTAL)  
(STACKED)

NEW DISH WIRELESS ANTENNA  
(TYP. 2 PER SECTOR, 6 TOTAL)

NEW TOWER MOUNTING  
TO BE PROVIDED BY SCE

NEW DISH WIRELESS SURGE  
SUPPRESSOR MOUNTED BEHIND RADIOS  
(1 TOTAL)

NEW DISH WIRELESS  
EQUIPMENT LOCATION  
SEE EQUIPMENT PLAN  
A/B

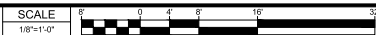
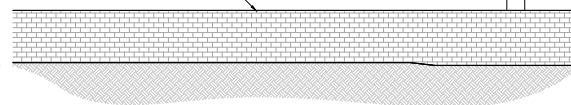
NEW DISH WIRELESS  
UNDERGROUND POWER AND  
FIBER RUN FROM LEASE AREA TO  
EXISTING TRANSMISSION POLE

TOP OF EXISTING TRANSMISSION TOWER  
ELEV = ± 138'-0"

GROUND LEVEL  
ELEV. 0'-0" (REF)

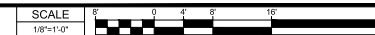
EXISTING CMU WALL

EXISTING SCE TOWER



2

### NEW NORTHEAST ELEVATION



1

EUKON DISH EDR-V1



16812 ARMSTRONG AVE  
SUITE 200  
IRVINE, CA 92606



an SFC Communications, Inc. Company  
65 POST, SUITE 1000  
IRVINE, CA 92618  
TEL: (949) 553-8566  
[www.eukongroup.com](http://www.eukongroup.com)

IT IS A VIOLATION OF LAW FOR ANY PERSON, UNLESS THEY ARE ACTING UNDER THE DIRECTION OF THE LICENSED PROFESSIONAL ENGINEER, TO ALTER THIS DOCUMENT.

DRAWN BY:	UTILITIES CHECKED BY:	A&E CHECKED BY:
JMD	GD	RB

RFDS REV #: --

### ZONING DRAWINGS

SUBMITTALS		
REV	DATE	DESCRIPTION
0	07/29/21	90% ZONING DRAWINGS
1	10/25/21	90% ZONING DRAWINGS

DISH WIRELESS PROJECT INFORMATION  
**SCE TYLER SYLMAR**  
**LALAX04506A**  
34°19'12.28"N, 118°26'35.81"W  
SYLMAR, CA 91342

### SHEET TITLE

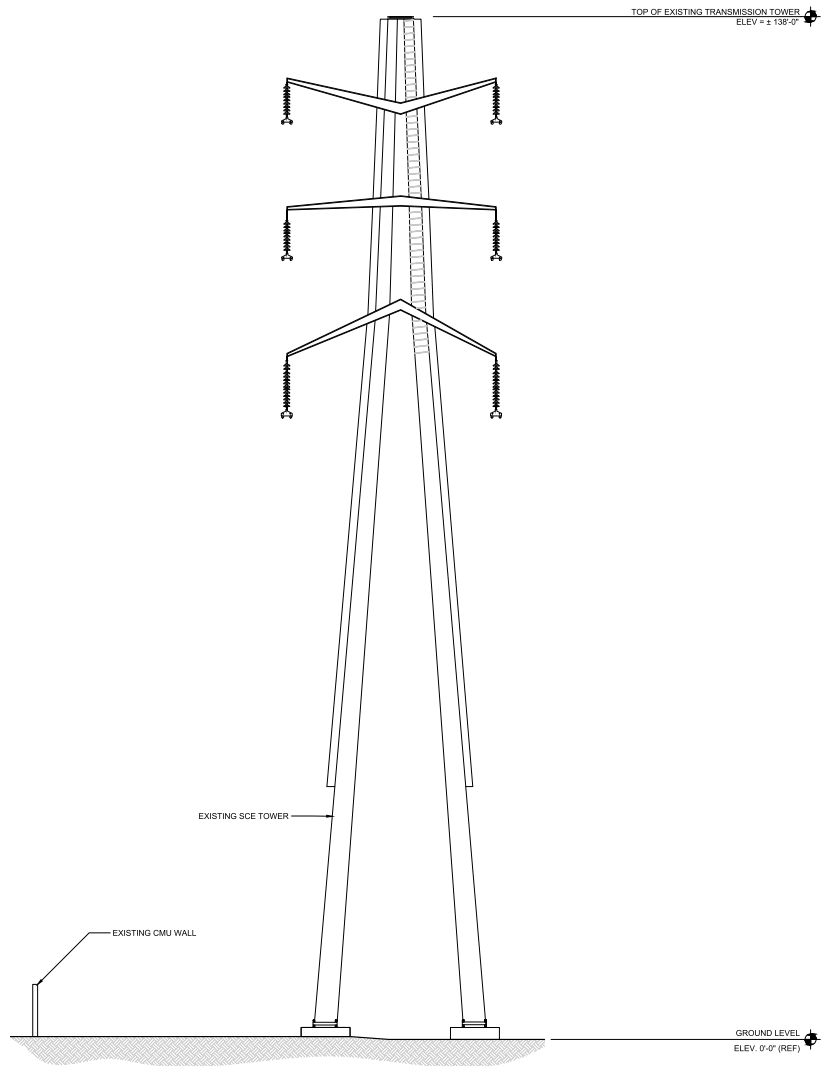
## ELEVATIONS

SHEET NUMBER

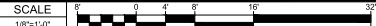
# A-5

#### NOTES:

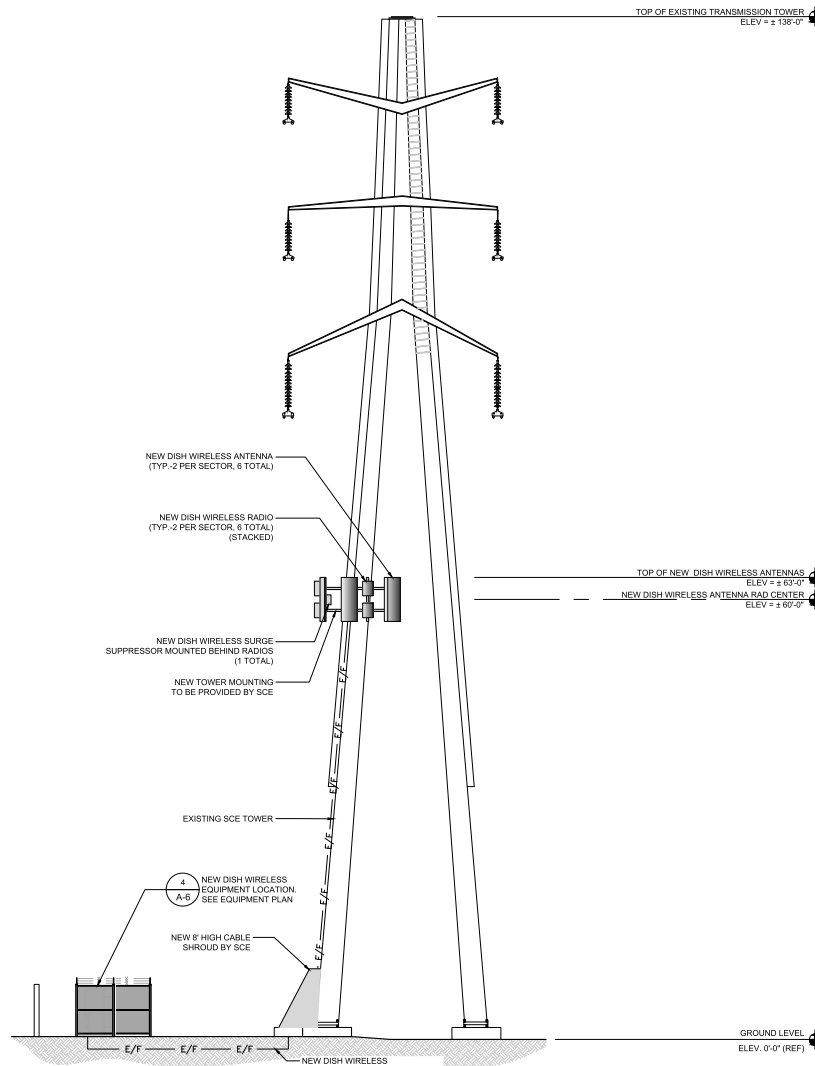
- IF DIMENSIONS SHOWN ON PLAN DO NOT SCALE CORRECTLY, CHECK FOR REDUCTION OR ENLARGEMENT FROM ORIGINAL PLANS.
- CONTRACTOR SHALL FIELD VERIFY ALL DIMENSIONS.
- CONTRACTOR SHALL MAINTAIN A 10'-0" MINIMUM SEPARATION BETWEEN THE NEW GPS UNIT, TRANSMITTING ANTENNAS AND EXISTING GPS UNITS.



EXISTING NORTHWEST ELEVATION



2



NEW NORTHWEST ELEVATION



1





16812 ARMSTRONG AVE  
SUITE 200  
IRVINE, CA 92606



an SFC Communications, Inc. Company  
65 POST, SUITE 1000  
IRVINE, CA 92618  
TEL: (949) 553-8566  
[www.eukongroup.com](http://www.eukongroup.com)

IT IS A VIOLATION OF LAW FOR ANY PERSON, UNLESS THEY ARE ACTING UNDER THE DIRECTION OF THE LICENSED PROFESSIONAL ENGINEER, TO ALTER THIS DOCUMENT.

DRAWN BY:	UTILITIES CHECKED BY:	A&E CHECKED BY:
JMD	GD	RB

RFDS REV #: --

### ZONING DRAWINGS

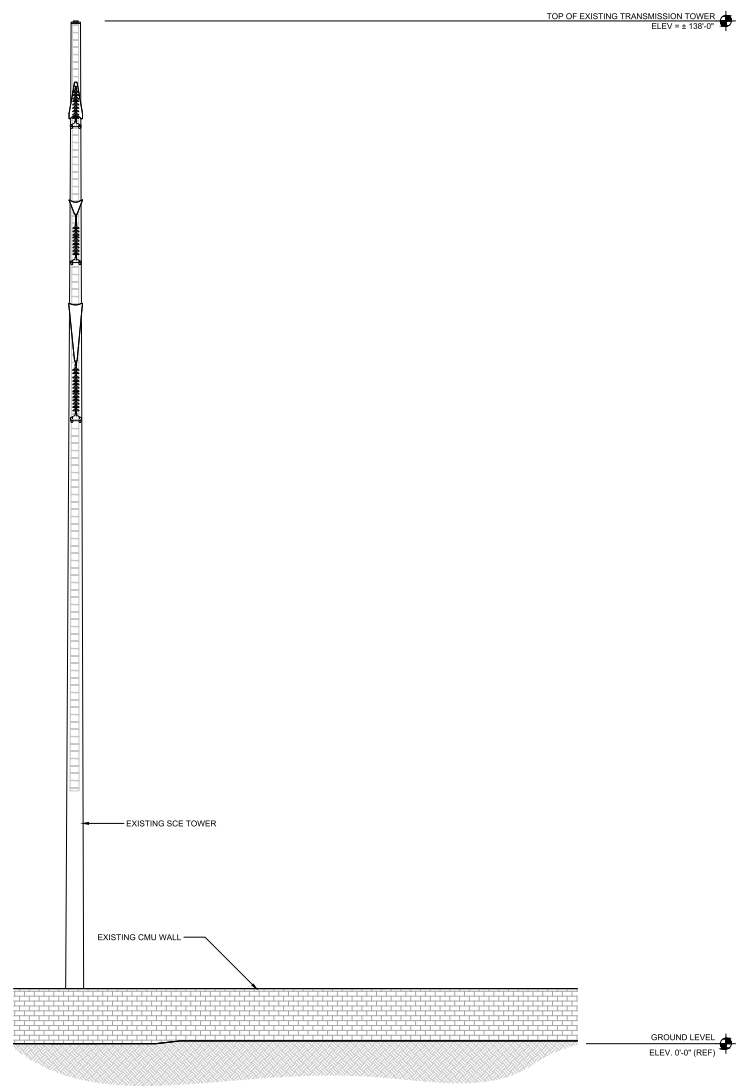
SUBMITTALS		
REV	DATE	DESCRIPTION
0	07/29/21	90% ZONING DRAWINGS
1	10/25/21	90% ZONING DRAWINGS

DISH WIRELESS PROJECT INFORMATION  
**SCE TYLER SYLMAR**  
**LALAX04506A**  
34°19'12.28"N, 118°26'35.81"W  
SYLMAR, CA 91342

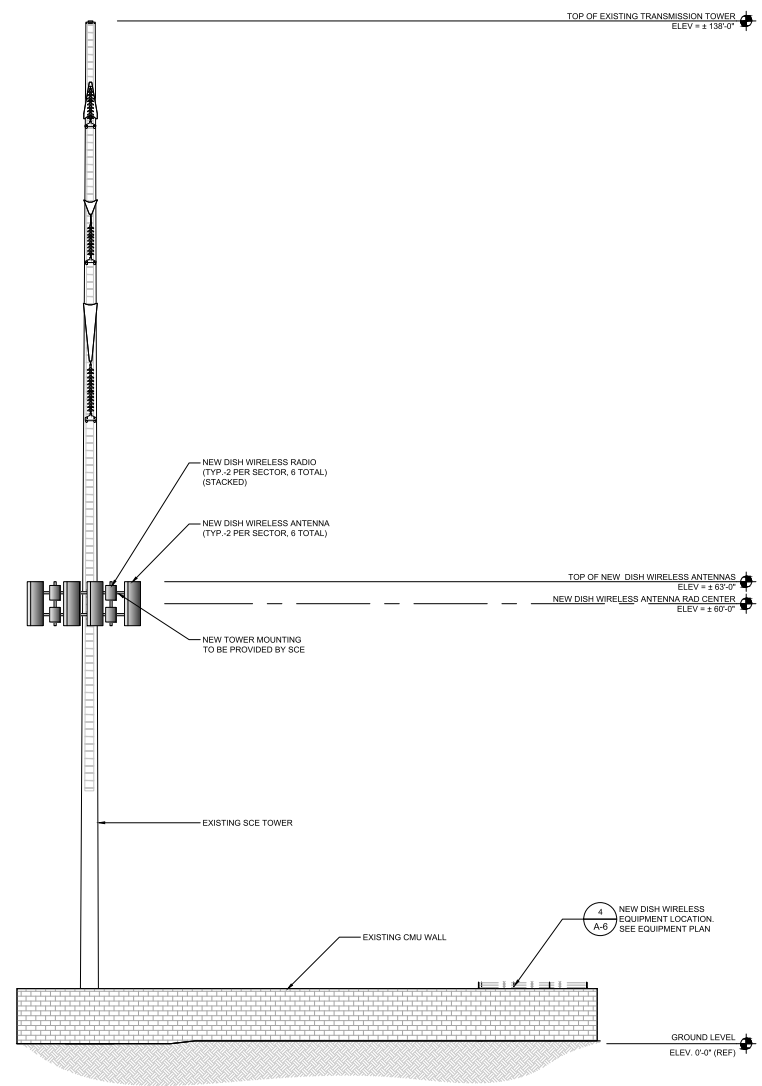
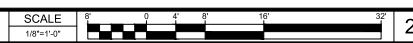
SHEET TITLE  
**ELEVATIONS**

SHEET NUMBER  
**A-6**

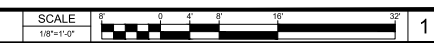
- NOTES:**
- IF DIMENSIONS SHOWN ON PLAN DO NOT SCALE CORRECTLY, CHECK FOR REDUCTION OR ENLARGEMENT FROM ORIGINAL PLANS.
  - CONTRACTOR SHALL FIELD VERIFY ALL DIMENSIONS.
  - CONTRACTOR SHALL MAINTAIN A 10'-0" MINIMUM SEPARATION BETWEEN THE NEW GPS UNIT, TRANSMITTING ANTENNAS AND EXISTING GPS UNITS.



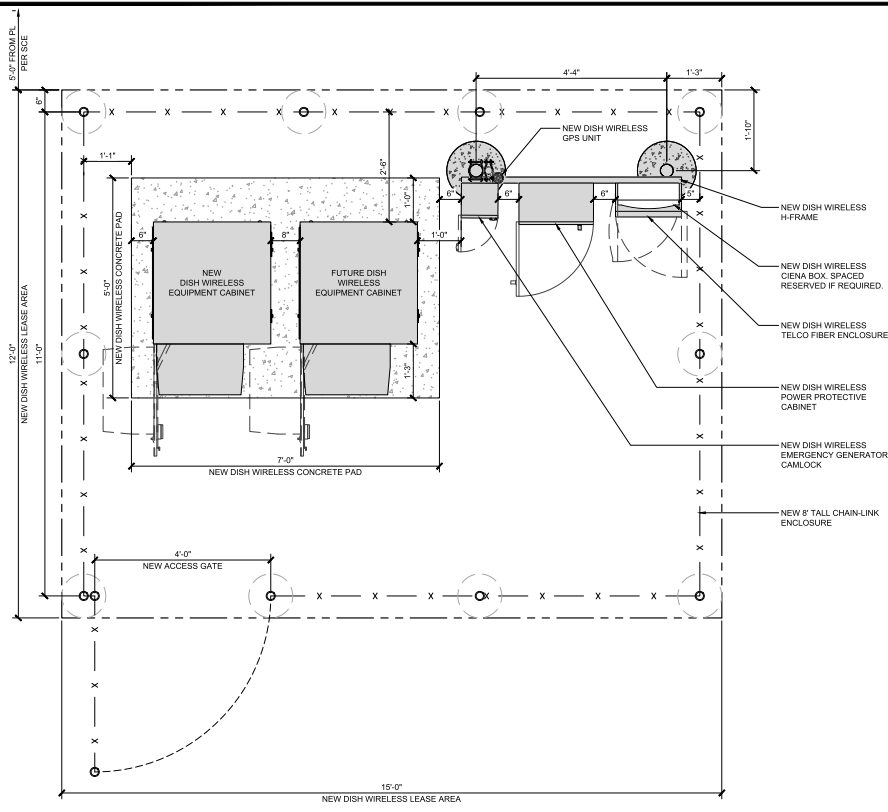
EXISTING SOUTHWEST ELEVATION



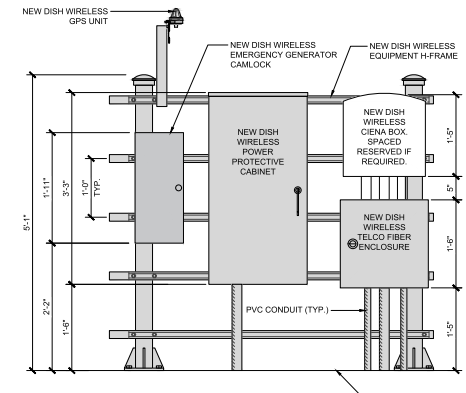
NEW SOUTHWEST ELEVATION



EUKON DISH EBR V1



NOTE:  
1. EQUIPMENT CABINET OMITTED FOR CLARITY.



EQUIPMENT PLAN

SCALE	1" = 3'-0"	4
-------	------------	---

H-FRAME EQUIPMENT ELEVATION

SCALE	1" = 1'-0"	2
-------	------------	---

NOT USED

SCALE	NONE	5
-------	------	---

NOT USED

SCALE	NONE	3
-------	------	---

NOT USED

SCALE	NONE	1
-------	------	---

16812 ARMSTRONG AVE  
SUITE 200  
IRVINE, CA 92606

65 POST, SUITE 1000  
IRVINE, CA 92618  
TEL: (949) 553-8566  
[www.eukongroup.com](http://www.eukongroup.com)

IT IS A VIOLATION OF LAW FOR ANY PERSON, UNLESS THEY ARE ACTING UNDER THE DIRECTION OF THE LICENSED PROFESSIONAL ENGINEER, TO ALTER THIS DOCUMENT.

DRAWN BY:	UTILITIES	A&E
CHECKED BY:	GD	RB

RFDS REV #: --

**ZONING DRAWINGS**

REV	DATE	DESCRIPTION
0	07/29/21	90% ZONING DRAWINGS
1	10/25/21	90% ZONING DRAWINGS

DISH WIRELESS PROJECT INFORMATION  
**SCE TYLER SYLMAR**  
**LALAX04506A**  
34°19'12.28"N, 118°26'35.81"W  
SYLMAR, CA 91342

SHEET TITLE  
**EQUIPMENT PLAN AND DETAILS**

SHEET NUMBER  
**A-7**

EUKON: DISH: EDR: V1