

SYLMAR CHANNEL PROJECT



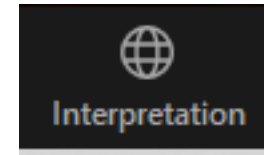
City of Los Angeles Safe Clean Water Program

May 11, 2022



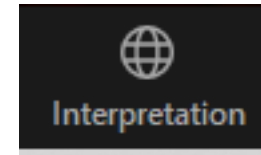
SYLMAR CHANNEL PROJECT

- Welcome
- Thank you for being here!
- Spanish Channel



PROYECTO SYLMAR CHANNEL

- Bienvenido
- ¡Gracias por acompañarnos!
- Canal en español



Housekeeping Items

- We are translating tonight's meeting into Spanish, so you may notice a brief pause between slides, while our presenter waits for our Spanish translator to finish.
- Tonight's presentation will be recorded and will be placed on LASAN's YouTube channel.
- We will e-mail a copy of the presentation to participants who RSVP'd to tonight's meeting.
- We will have a questions and answers segment at the end of the presentation:
 - Please use the Q+A feature at the bottom of your screen to ask questions in English or Spanish.
 - Answers will be provided by a panelist or written in the Q+A feature.



Tonight's Speakers

Leneyde Chavez, LA Sanitation and Environment

City of Los Angeles, Council District 7

Barbara Romero, Director and General Manager LA Sanitation and Environment

Lorena Matos, LA Sanitation and Environment



AGENDA

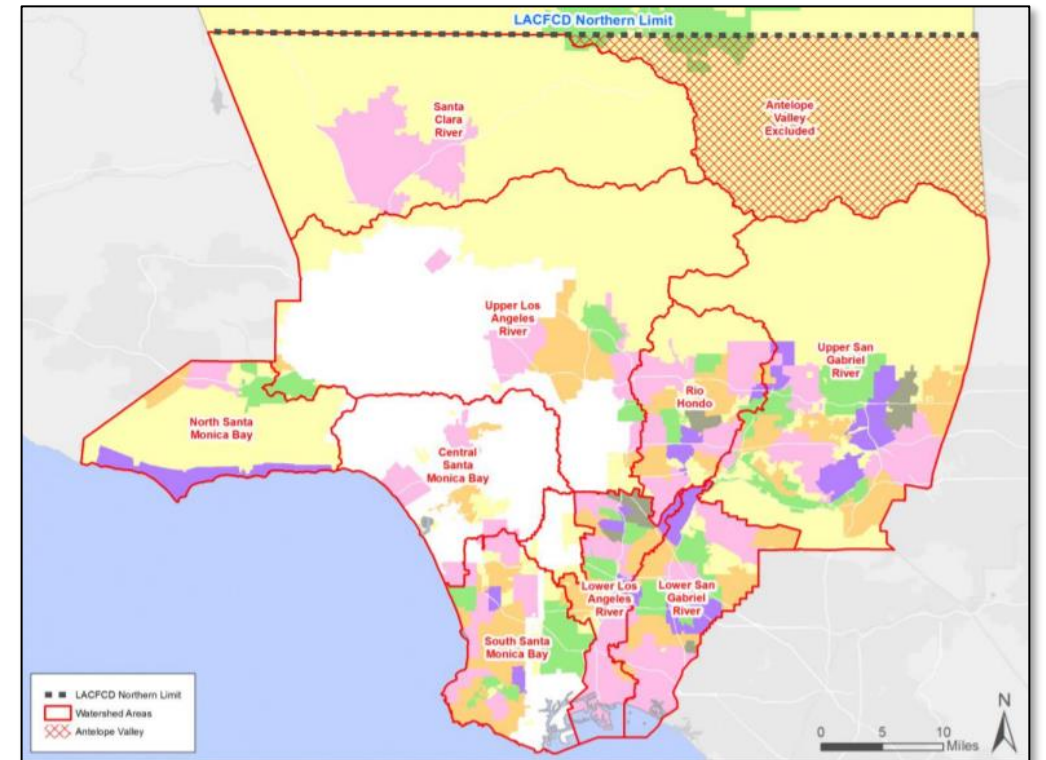
- Purpose of Tonight's Webinar
- Safe Clean Water Program
- Project Goals, Location, and Key Areas
Considered
- Project Design and Benefits
- Project Next Steps
- Questions and Answers

Purpose of Tonight's Meeting

1. To inform the community about the current status of the **Sylmar Channel Project** proposal.
2. To hear from you and understand what is important to the community regarding this project proposal.
3. To answer your questions related to the project proposal.

Safe Clean Water Program

- LA County voters passed Measure W in 2018 to establish the Safe Clean Water Program.
- The program generates approximately \$275 million annually for multi-benefit projects that will improve water quality and capture stormwater.
- Program includes funding for municipalities and a regional competitive grant program for LA County's nine watersheds.
- The Sylmar Channel Project is located in the Upper Los Angeles River watershed.



Safe Clean Water Program

Water Quality Compliance

- Protect water quality
- Protect rivers, lakes, and bays
- Assist in compliance with federal, state, and local water quality mandates



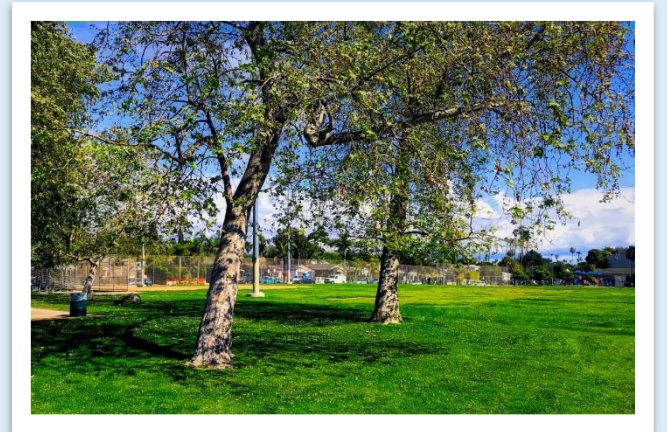
Water Supply & Resilience

- Reduce LA's reliance on imported water
- Develop new water supplies



Community Investments

- Invest in disadvantaged communities
- Create more green space
- Environmental justice
- Flood protection
- Create jobs for local workforce



Safe Clean Water Program- Scoring Breakdown

Category	Available Points	Description
A (A.1 or A.2) Water Quality	50	Project is scored based on its ability to provide water quality benefits to the watershed area.
B Water Supply	25	Project is scored based on its ability to provide water re-use and/or water supply enhancement benefits.
C Community Investment Benefits	10	Project is scored based on its ability to provide community investment benefits.
D Nature-Based Solutions	15	Project is scored based on its ability to implement nature-based solutions.
E Leveraging Funds and Community Support	10	Project is scored based on its ability to achieve additional funding and demonstrate strong local, community-based support.
TOTAL POINTS POSSIBLE TO SCORE	110	

Sylmar Channel Project

This project aims to improve water quality, increase water supply, mitigate localized flood issues, and provided improved walkability and educational opportunities within Sylmar and the Upper Los Angeles River (ULAR)

Project Objectives:

- Improve public health
- Improve and install stormwater capture infrastructure
- Invest in the community using nature-based solutions



Initial Concepts were Presented to Community:

- Last Project Discussion meeting was held August 25th, 2021
- Discussed initial concepts including addition of community recreational opportunities (pedestrian and equestrian)
- Channel improvements
- Incorporation of green street elements

Sylmar Channel Project

Key Areas Considered



Sylmar Channel Project

Current Channel Conditions



Sylmar Channel Project

Current Channel Conditions



Sylmar Channel Project

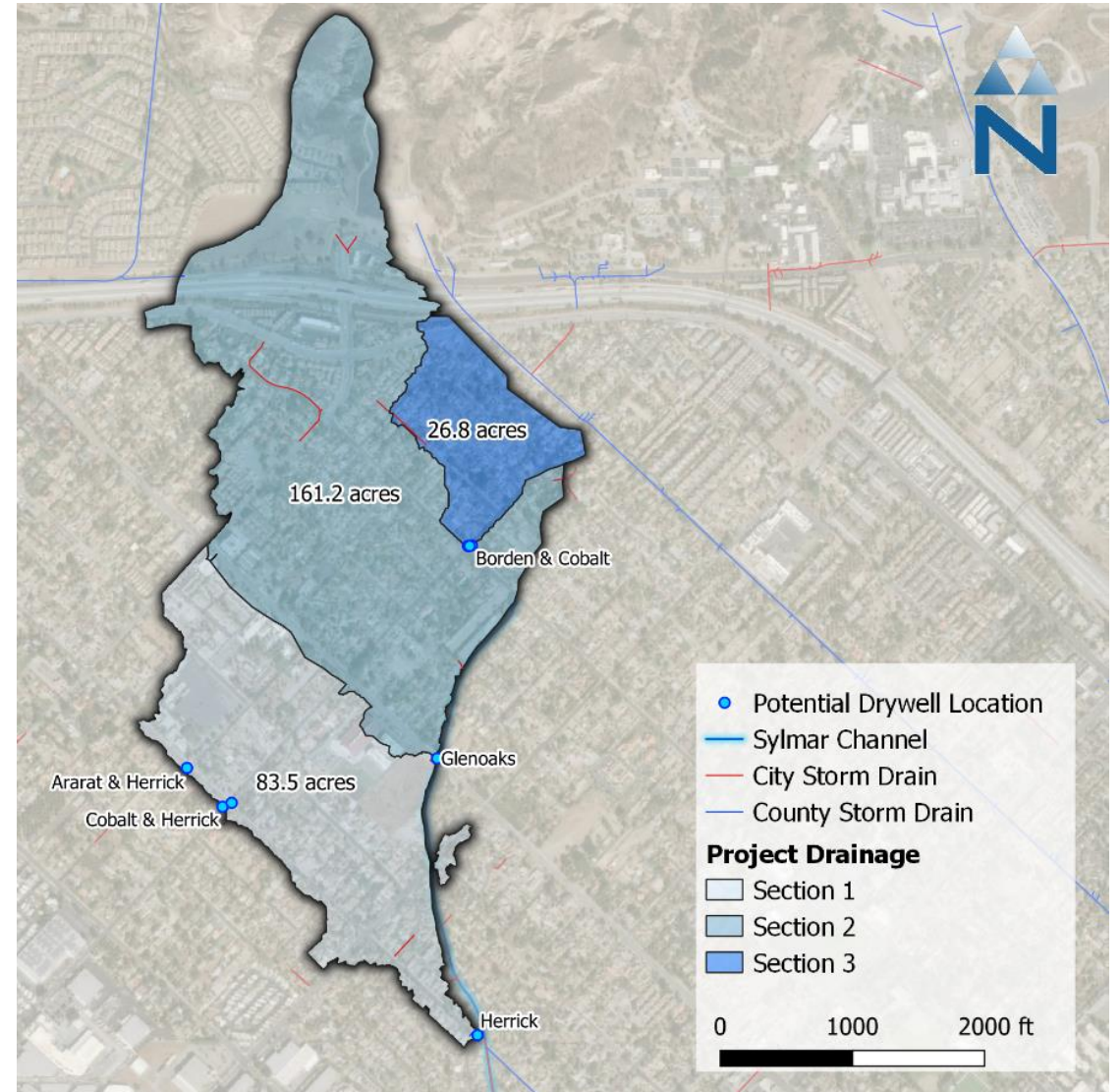
Current Channel Conditions



Sylmar Channel Project

Watershed Areas Considered in Project Development

- Project Channel improvements extend from Glenoaks Blvd to Herrick Ave
- Project utilizes 25 drywells to manage stormwater from more urban areas



Proposed Project Plan

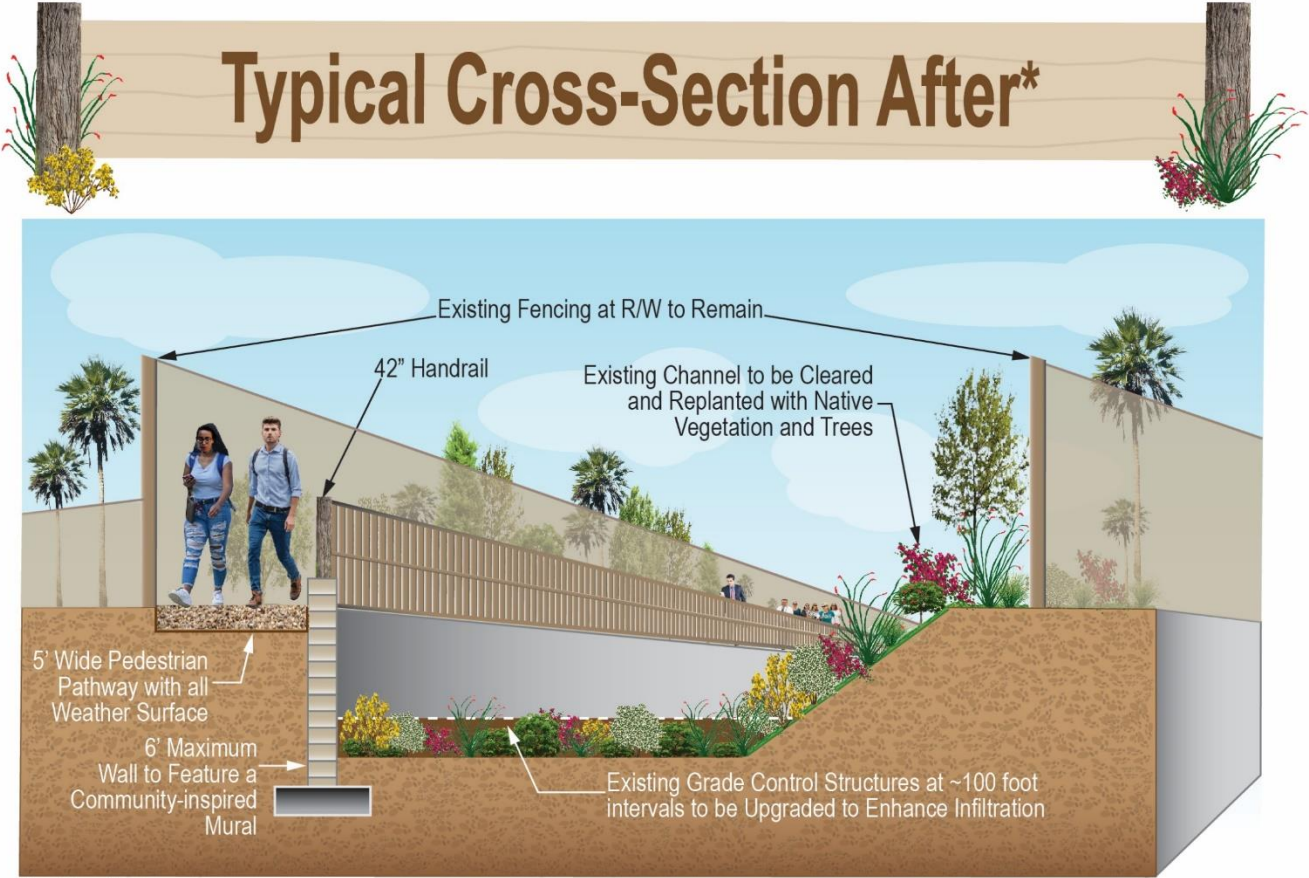
Conceptual idea only! We will be meeting with the community during the design phase for further guidance.



Sylmar Channel Project

Proposed Project Channel Cross-Section

Cross-Section Before

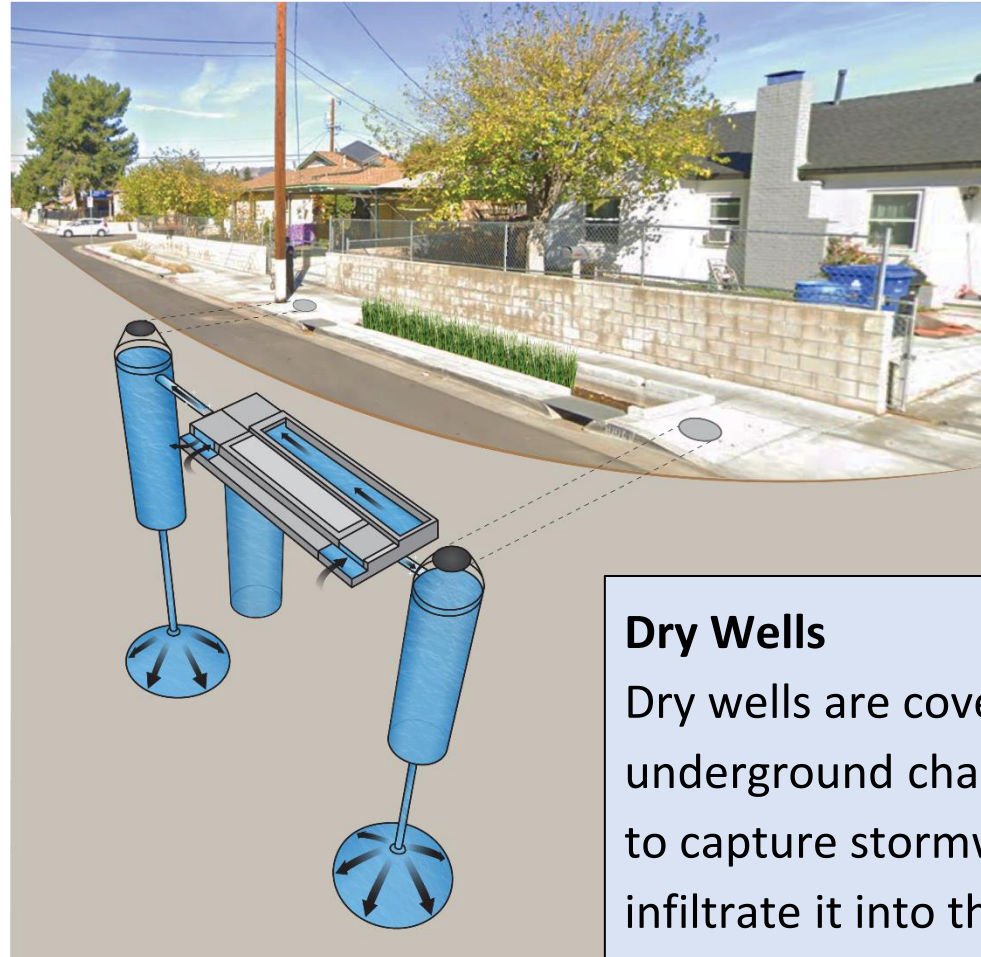


Conceptual idea only! We will be meeting with the community during the design phase for further guidance.

Proposed Project Drywells

- Drywells capture and treat stormwater to reduce volume and pollutant loads
- Drywells use minimal surface footprint
- Project proposes 25 drywells throughout the drainage area located within public right-of-way

Conceptual idea only! We will be meeting with the community during the design phase for further guidance.



Dry Wells

Dry wells are covered, underground chambers designed to capture stormwater and infiltrate it into the ground after it has been treated.

Project Timeline and Next Steps



Project scoped with input from CD7

Project application to be submitted to LA County's Safe Clean Water Program's regional grant program

- 1. Project scored by the Scoring Committee
- 2. Project presented at the Watershed Area Steering Committee who decide whether to recommend funding

Early 2022

July 2022

November 2022

June 2022

Fall 2022

Early to Mid 2023

Feasibility study to be completed

Community outreach meetings

Funding decision expected from the Safe Clean Water Program

Sylmar Channel Project Interactive Poll

slido

Join at
slido.com
#196 099



Sylmar Channel Project Interactive Poll

The image is a screenshot of the Slido website. At the top left, the URL **www.Slido.com** is displayed in a browser address bar, highlighted with a red box. Below the address bar is the Slido logo. The navigation menu includes links for Product, Solutions, Pricing, Resources, Enterprise, and Log In, along with a green **Sign Up** button. A central blue button asks "Joining as a participant?" and is followed by a red-bordered box containing the poll code **196099** and a text input field with the placeholder "# Enter code here" and a right-pointing arrow. The main heading reads "Your go-to interaction app for hybrid meetings". Below this, a sub-heading states "Engage your participants with live polls, Q&A, quizzes and word clouds — whether you meet in the office, online or in-between." At the bottom, there are two green buttons: "Get started for free" and "Schedule a demo".

Sylmar Channel Project Interactive Poll

Step 1

slido

Welcome to
Sylmar Channel Project
May 9 – 13, 2022

Full name *

I agree to use my profile details while using Slido. [Learn more](#)

Join event

Back to search

To get started, type in your name, make sure to check the agreement box and click on the **GREEN** button to continue.

What project features are more important for you? | ¿Qué características del proyecto son más importantes para usted?

Select 3 options from the list below.

- Pedestrian footpath along channel | Sendaro peatonal a lo largo del canal
- Cleared and revegetated channel | Canal despejado y revegetado
- Additional trees | Árboles adicionales
- Drywell implementation for additional stormwater capture | Implantación de pozos secos para la captación adicional de aguas pluviales
- Green street elements such as bioswales | Elementos de las calles verdes, como los drenajes sostenibles

Send

This is a live poll. Select your response and when you are ready click the **GREEN** button to submit your answer.

How The Community Can Help

- 1. Provide your verbal support** at the Watershed Area Steering Committee meeting.
- 2. Provide a letter of support** for the City of Los Angeles' Sylmar Channel Project by June 30, 2022. Templates to be provided for your convenience.
- 3. Stay engaged!** Let us know if you'd like to receive periodic project updates via e-mail.



**E-mail your questions about the project, your letter of support
or your interest in receiving periodic updates:**

san.safecleanwater@lacity.org

Please place “Sylmar Channel Project” in the subject line.

Q & A

Ask a question using the Q&A or chat feature.

Submit your questions via e-mail:
san.safecleanwater@lacity.org

Please place “Sylmar Channel Project” in the subject line.



SAFE
CLEAN
WATER

Thank you!

LA Sanitation and Environment

san.safecleanwater@lacity.org



SAFE
CLEAN
WATER